

## Why EdGuardX



### Reliable

TSE certified, tested and approved.



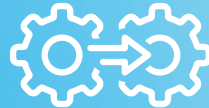
### Durable

High-strength steel, long-lasting performance.



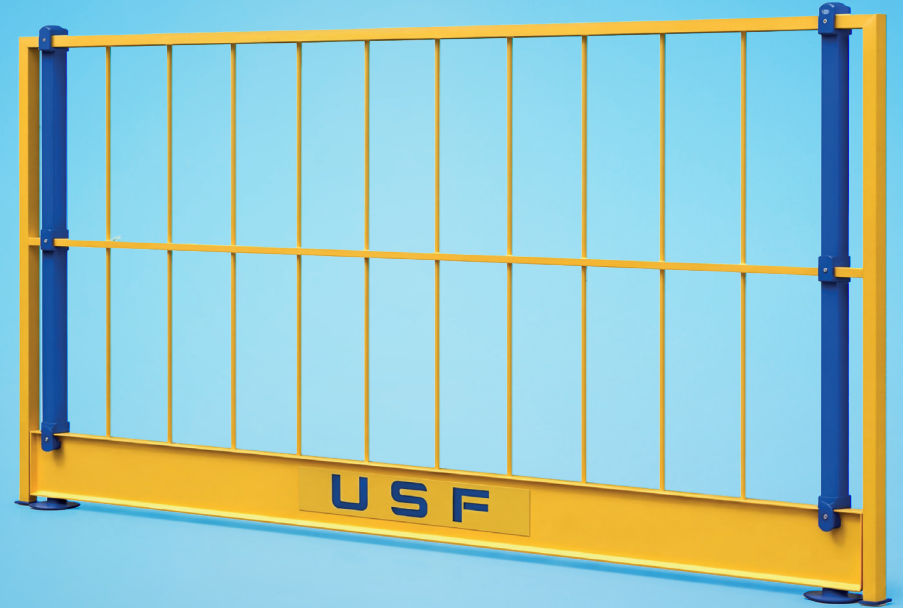
### Practical

Quick installation/dismantling, no tools required.



### Adaptive

Modular design, fits every job site.



## Contact



Scan the QR code to visit our website.

### Contact!

📍 Balçık Mah. 4868. Sk. No: 3  
Gebze/KOCAELI

🌐 [usfgrup.com](http://usfgrup.com)

☎ 0(541) 800 00 00

✉ [info@usfgrup.com](mailto:info@usfgrup.com)

2026

# EDGUARDX

Temporary Edge Protection System

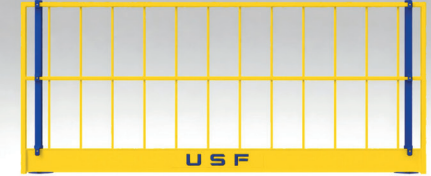
- **TS EN 13374**  
Class A Certified
- **2,70 x 1,50cm**  
Width
- **15+ Years**  
Industry Experience

**A Class**  
TS EN 13374

CERTIFIED PRODUCT



Flat and Slightly Inclined Surfaces (0°–10°)



## Product Description

The EDGUARDX Temporary Edge Protection System is designed to prevent fall-related accidents in the construction industry. Compliant with the **TS EN 13374 Class A** standard, it offers a high-strength and modular safety solution. Its structure ensures full adaptability to site conditions, enabling fast installation and dismantling. Developed with over **15 years of industry experience** by **USF Formwork & Scaffolding**, EDGUARDX delivers reliability, durability, and efficiency on site.

## What is TS EN 13374?

TS EN 13374 is a European standard that defines the design, performance, and testing requirements for temporary edge protection systems used in the construction industry. Class A is the most commonly used category, suitable for flat or slightly inclined surfaces (0°–10°). EDGUARDX complies with all requirements of this standard and has obtained TSE approval certification. Our products have successfully passed both static and dynamic load tests in accredited laboratories.

## Certification Information

- TSE Certificate**  
 TS EN 13374 Class A compliance certificate
- OHS Compliance**  
 Compliant with Occupational Health and Safety Law No. 6331
- Test Report**  
 Accredited laboratory test report



TSE Compliance Certificate  
No: 0197502-TSE-03/01

## Technical Specifications

Product Name	EDGUARDX Temporary Edge Protection System
Standard	TS EN 13374 Class A
Panel Width	270 cm
Panel Height	115 cm
Material	High-strength steel profile
Surface Coating	Electrostatic powder coating (corrosion-resistant)
Color	RAL 1023 Traffic Yellow / Blue posts
Guardrail Type	Modular steel guardrail system
Toe Board	Included
Installation	Quick installation with concrete anchors
Applications	Building edges, slab edges, stair voids

### Important Note

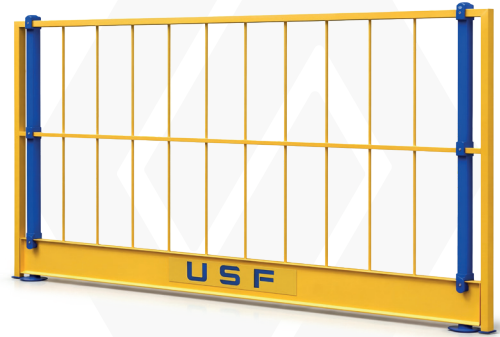
All EDGUARDX products are tested to TS EN 13374 and TSE certified. Fully compliant with mandatory OHS edge protection requirements.

## Products

### Product Code

#### EdGuardX Panel 2,70m x 1,50m

EdGuardX Barrier 2,70m x 1,50m

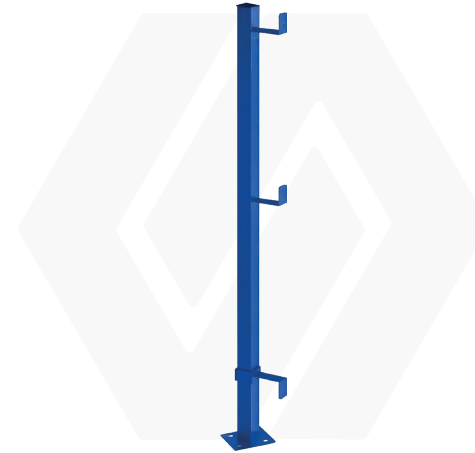


15,60 kg

EG.270.C04.1100

#### EdGuardX Barrier Post 1,15m

EdGuardX Post 1,15m



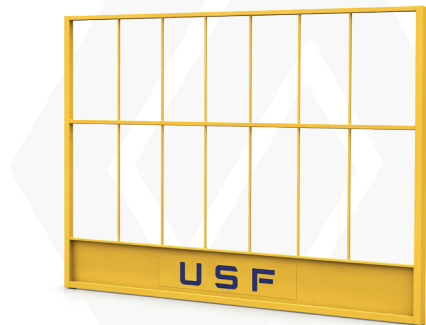
3,30 kg

### Product Code

EG.115.C04.1200

#### EdGuardX Panel 1,50m x 1,15m

EdGuardX Barrier 1,50m x 1,15m



9,80 kg

EG.150.C04.1100

#### EdGuardX Concrete Anchor

EdGuardX Anchorage



0,15 kg

PA.000.C03.1900

## Products

### EdGuardX Stair Post

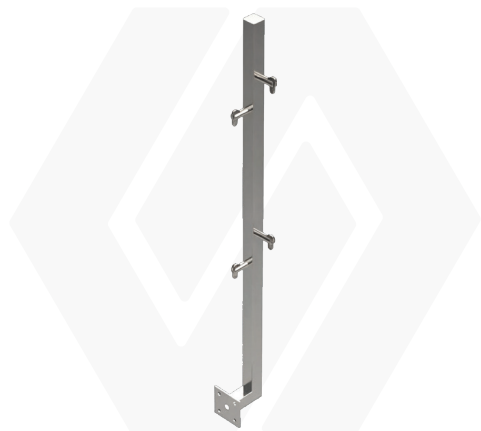


3,00 KG

## Product Code

EG.1115.C01.1000

### EdGuardX Horizontal Stair Post



3,70 KG

EG.1260.C01.1010

### EdGuardX Adjustable Handrail



2,80 KG

4,50 KG

6,00 KG

85x140 CM

140x250 CM

200x350 CM

## Product Code

EG.0850.C02.0140

EG.0140.C02.0250

EG.0200.C02.0350